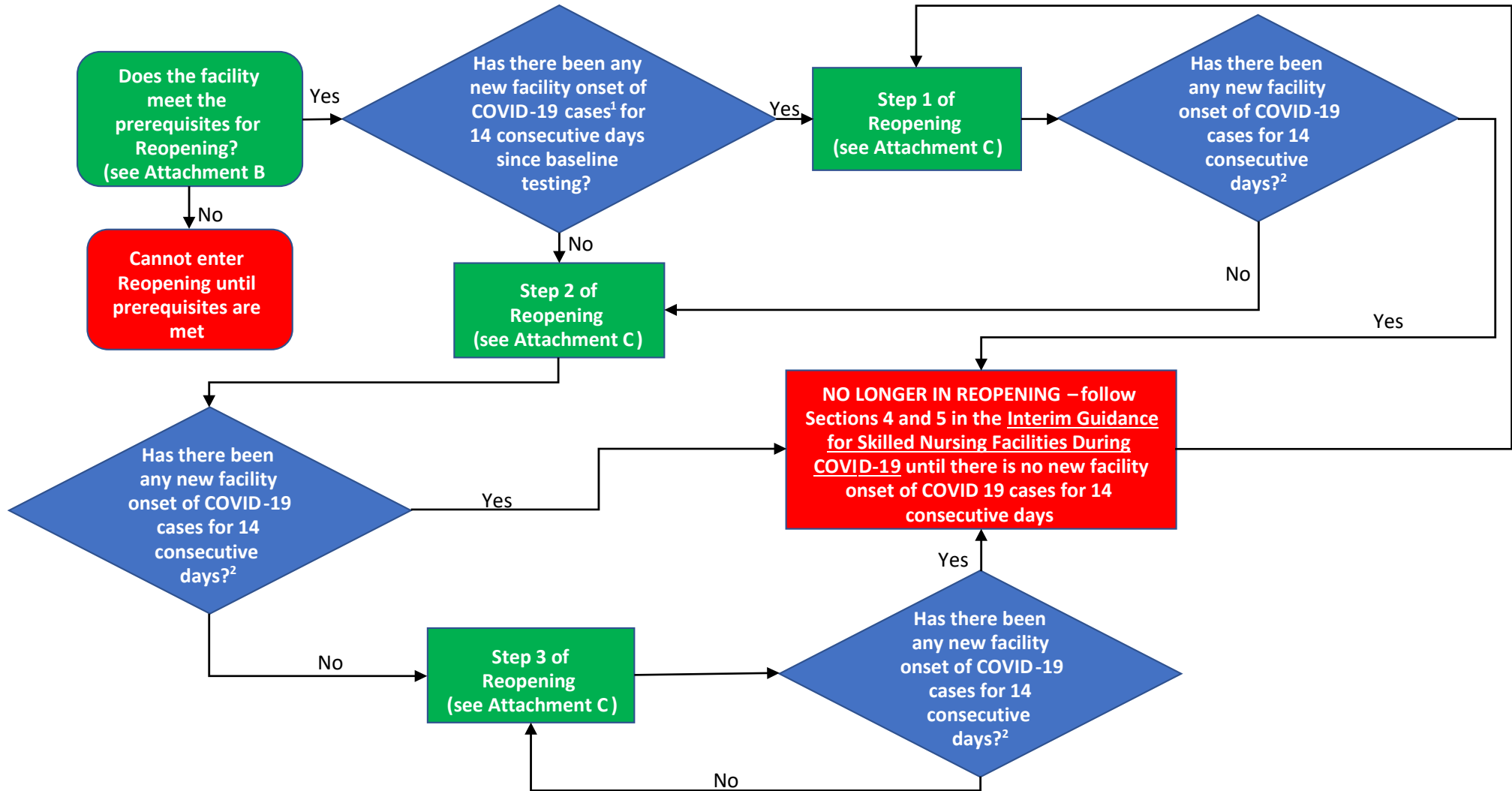


**Pine Run Health Center (A)
FLOWCHART FOR REOPENING STEPS**



¹“New facility onset of COVID-19 cases” refers to COVID-19 cases that originated in the facility, and not cases where the nursing home admitted individuals from a hospital with a known COVID-19 positive status, or unknown COVID-19 status but became COVID-19 positive within 14 days after admission. In other words, if the number of COVID-19 cases increases because a facility is admitting residents from the hospital AND they are practicing effective Transmission-Based Precautions to prevent the transmission of COVID-19 to other residents, that facility may still advance through the steps of reopening. However, if a resident contracts COVID-19 within the facility without a prior hospitalization within the last 14 days, the facility will be deemed to have new facility onset of COVID-19.

²If at any point during the 14 consecutive days there is any new facility onset of COVID-19 cases, the facility is NO LONGER IN REOPENING.

Pine Run Health Center - ATTACHMENT B
CHECKLIST FOR PREREQUISITES TO REOPENING

In accordance with the *Interim Guidance for Skilled Nursing Facilities During COVID-19*, all prerequisites must be met before a facility enters Step 1, advances to each new Step, or remains in each Step.

- A testing plan that, at minimum:
 - Complies with the Secretary's June 8, 2020, Order and has already been implemented to complete baseline Universal testing;
 - Includes the capacity to administer COVID-19 diagnostic tests to all residents showing symptoms of COVID-19 and do so within 24 hours;
 - Includes the capacity to administer COVID-19 diagnostic tests to all residents and staff if the facility experiences an outbreak;
 - Includes the capacity to administer COVID-19 diagnostic tests to all staff, including asymptomatic staff;
 - Includes a procedure for addressing needed testing of non-essential staff and volunteers; and
 - Includes a procedure for addressing residents or staff that decline or are unable to be tested.

- A plan to cohort or isolate residents diagnosed with COVID-19 in accordance with [PA-HAN-509](#) pursuant to Section 1 of the *Interim Guidance for Skilled Nursing Facilities During COVID-19*.

- A written screening protocol for all staff during each shift, each resident daily, and all persons (visitors, volunteers, non-essential personnel, and essential personnel) entering the facility or facility grounds.

- A plan to ensure and a current cache of an adequate supply of personal protective equipment for staff (based on the type of care expected to be provided).

- A plan to ensure and a current status of adequate staffing – no staffing shortages and the facility is not under a contingency staffing plan.

- A plan to allow for communal dining and activities to resume pursuant to the guidance provided in Section 6d of the *Interim Guidance for Skilled Nursing Facilities During COVID-19*.

- A plan to allow for visitation pursuant to the guidance provided in Section 6e of the *Interim Guidance for Skilled Nursing Facilities During COVID-19*.

- A plan to halt all reopening facilities if the county in which the facility is located is reverted to a [Red Phase of the Governor's Reopening Plan](#).

- Acknowledgement that the facility is in a Yellow or Green county per the Governor's Reopening Plan.

- Post the Implementation Plan on the facility's website, if the facility has an existing website, or make it available to all residents, families, advocates such as the Ombudsman, and the Department upon request.

**Pine Run Health Center
ATTACHMENT C
STEPS TO REOPEN**

	Step 1	Step 2	Step 3
Dining¹	Communal dining is limited to residents unexposed to COVID-19. Those residents may eat in the same room with social distancing (limited number of people at tables and spaced by at least six feet). Adhere to the Precautions When Meals Are Served in a Common Area in Section 5 of this guidance. <i>All other residents must adhere to the restrictions in Section 5, Dining Services When Not in the Reopening Process of the Interim Guidance for Skilled Nursing Facilities During COVID-19.</i>		
Activities	Limited activities may be conducted with <i>five or less</i> residents unexposed to COVID-19. Social distancing, hand hygiene, and universal masking are required.	Limited activities may be conducted with <i>ten or less</i> residents unexposed to COVID-19. Social distancing, hand hygiene, and universal masking are required.	Activities may be conducted with residents unexposed to COVID-19. Social distancing, hand hygiene, and universal masking are required.
Non-Essential Personnel	<i>Adhere to restrictions in Section 4, Visitor Policies When Not in the Reopening Process of the Interim Guidance for Skilled Nursing Facilities During COVID-19.</i>	Non-essential personnel are allowed as determined necessary by the facility, with screening and additional precautions including social distancing, hand hygiene, and universal masking. <i>Services for exposed residents adhere to the restrictions in Section 4, Visitor Policies When Not in the Reopening Process of the Interim Guidance for Skilled Nursing Facilities During COVID-19.</i>	Non-essential personnel are allowed with screening and additional precautions including social distancing, hand hygiene, and universal masking. <i>Services for exposed residents adhere to the restrictions in Section 4, Visitor Policies When Not in the Reopening Process of the Interim Guidance for Skilled Nursing Facilities During COVID-19.</i>
Volunteers	<i>Adhere to restrictions in Section 4, Visitor Policies When Not in the Reopening Process of the Interim Guidance for Skilled Nursing Facilities During COVID-19.</i>	Volunteers are allowed only for the purpose of assisting with visitation protocols ² and may only conduct volunteer duties with residents unexposed to COVID-19. Screening, social distancing, and additional precautions including hand hygiene and universal masking are required.	Volunteers are allowed but may only conduct volunteer activities with residents unexposed to COVID-19. Screening, social distancing, and additional precautions including hand hygiene and universal masking are required.
Visitors	<i>Adhere to restrictions in Section 4, Visitor Policies When Not in the Reopening Process of the Interim Guidance for Skilled Nursing Facilities During COVID-19.</i>	Outdoor visitation (weather permitting) is allowed in neutral zones to be designated by the facility. If weather does not permit outdoor visitation, indoor visitation is allowed in neutral zones to be designated by the facility and defined in their Implementation Plan. Visitation is limited to	Indoor visitation is allowed in neutral zones to be designated by the facility. Visitation is limited to residents unexposed to COVID-19. Visiting in a resident's room (within facility's established protocols) is permitted only if the resident is unable to be transported to designated area. Cross-over

¹ Communal dining is the same for all steps of reopening.

² Outdoor visitation protocols could include scheduling of visits, transporting (but not lifting) residents and monitoring visitation.

	Step 1	Step 2	Step 3
		residents unexposed to COVID-19. Review Section 6e for additional requirements. Visitation for exposed residents adhere to the restrictions in Section 4, Visitor Policies Not Impacted by the Reopening Process of the <i>Interim Guidance for Skilled Nursing Facilities During COVID-19.</i>	visitation is only permitted if there is no new facility onset of COVID-19 in the facility in which the cross-over visitor resides. Review Section 6e for additional requirements. Visitation for exposed residents adhere to the restrictions in Section 4, Visitor Policies Not Impacted by the Reopening Process of the <i>Interim Guidance for Skilled Nursing Facilities During COVID-19.</i>
Outings	Adhere to restrictions in Section 4, Visitor Policies Not Impacted by the Reopening of the <i>Interim Guidance for Skilled Nursing Facilities During COVID-19.</i>	Adhere to restrictions in Section 4, Visitor Policies Not Impacted by the Reopening of the <i>Interim Guidance for Skilled Nursing Facilities During COVID-19.</i>	Outings are allowed only for residents unexposed to COVID-19. Outings limited to no more than the number of people where social distancing between residents can be maintained. Appropriate hand hygiene, and universal masking are required. Outings for all exposed residents adhere to the restrictions in Section 4, Visitor Policies Not Impacted by the Reopening Process of the <i>Interim Guidance for Skilled Nursing Facilities During COVID-19.</i>

Pine Run Health Center- Reopening Implementaion Plan
Tentative date: July 24, 2020

Dear Residents, Family Members, Staff, Volunteers and Friends,

July 17, 2020

The impact of the Coronavirus (COVID-19) has reached most areas of the world, including our local region. Pine Run Health Center has always been dedicated to protecting the health and well-being of our residents and associates. We are actively working within the guidelines provided by the Centers for Disease Control (CDC) along with guidance from the PA Department of Health and Centers for Medicare and Medicaid Services (CMS).

To prevent the spread of any infectious respiratory illness, and to increase the safety of our residents and associates, Pine Run Health Center team has the following plan in place, as we move to the next phase- reopening to visitation and non-essential personnel.

As recommended by the Pennsylvania Department of Health, Pine Run Health Center has implemented universal testing of asymptomatic health care workers.

- Base line testing of all associates, as per the Order of the Secretary of Health, Pa Dept. of Health has been completed as of July 15, 2020
- There has been no new facility onset of COVID-19 cases in the past 14 days
- The facility has staff and supplies to administer COVID-19 swabbing of residents exhibiting symptoms, or random testing of asymptomatic residents
- Staff exhibiting symptoms are sent to Occupational Health at Doylestown Hospital and not permitted to return to work until results are received and symptoms subside
- Random testing of asymptomatic staff can be completed on site and sent to the lab within 24 hrs

- Testing is a part of the HR policy, staff who decline testing are not permitted to work

Co-Horting Residents:

- All new admissions, both long- and short-term, will be tested for COVID-19. While the results will not impact the acceptance of the admission, they guide us in their placement. Residents who test positive – or are suspected of having the virus – are safely quarantined from other Residents.
- The facility has designated an area on the 4th Floor, as the COVID-19 Isolation Unit with a plastic barrier installed at its entrance
- The facility follows the recommended guidelines of zones- Red- (Isolation Unit), Yellow(Exposed) Green (Unexposed)
- Adequate PPE is available for staff. Full PPE will be utilized when in the Red Zone
- The facility follows infection control guidance from the CDC and state authorities and continuously encourages safe social distancing and hand washing.
- The facility has designated staff for Isolation Unit / Red Zone
- Therapy will schedule services for the Isolation unit / Red Zone to be their last assignment of the day- exiting the building upon completing services.

Dining

Yellow & Red Zones

- All meals will be served on disposal trays and dinnerware in the isolation unit
- Staff will make sure residents wash their hands before and after meals

Green Zone

- Those on precautions will eat in their room
- Asymptomatic residents only in the dining room
- Two residents are seated per table with tables spread throughout the dining room to practice social distancing
- Tables to be wiped down completely between residents
- Upon completing meal- resident is encouraged to exit the dining room

Activities

Practicing social distancing, hand hygiene and universal masking as residents can tolerate

- Limited activities will be conducted with small groups, doorway activities and 1:1 visits
- Gradually adding to the group size over time

Non-Essential Personnel – Volunteers

- Will be screened upon entering and exiting the campus
- Are permitted in designated areas
- Must follow social distancing guidelines
- Practice hand hygiene and universal masking
- Beauty / Barber Salon- will be limited to 1 resident at a time

Visitors

- Visiting hours are Sun – Sat between 10am – 7pm
- Outdoor visitation is encouraged on the 2nd floor patio, under the canopy weather permitted
- All visitors are required to wear face masks during their entire visits
- Maintain social distancing and follow infection control protocols, hand sanitizer is available at the entrance and throughout the units
- No Children under the age of 12 will be permitted to visit
- Residents are limited to 2 visitors at a time while in the building, a limit of 4 visitors when visiting outside
- All visitors must sign in and out when entering & exiting the health center

Therapy

- Rehab gym will be utilized -limited the number to 2-3 residents at a time
- Equipment is sanitized after each use
- Those not on skilled services receive part B services on their units
- Scheduled Red Zone area residents for last sessions of day

All social or non-essential visitors, entering and exiting the campus will be restricted to one point of access where they will be screened per CDC guidelines. All staff members are screened upon arrival and departure for symptoms and fever; if any are detected, they are instructed to contact their supervisor and are not permitted to work. These additional measures have been adopted to supplement the current precautions and best practice CDC guidelines already implemented in our community. These include:

- Encouraging all residents and staff members to follow the recommendations from the CDC for preventing the spread of any viral respiratory infections within our community. These would include regular and proper hand washing techniques, practicing proper cough etiquette, and advising sick employees to remain at home if they exhibit signs of any illness.
- Requiring all essential personnel to answer screening questions prior to gaining admission to campus along with a temperature screening. For more information on COVID-19 visit www.coronavirus.gov.
- Transportation will continue for medically necessary appointments

If at any point there is a new facility onset of COVID-19, the facility will follow the guidelines of the Pa Department of Health reverting to restrictions on visitations, communal dining, activities, non-essential personnel and contractors

We will continue to monitor and assess the situation as more information becomes available. We appreciate your cooperation in trying to provide the safest environment possible for our residents. On behalf of the entire management team of Pine Run, we would like to thank you for your understanding as we navigate this ever-changing situation.